



# Santa Clara County Monthly Intergroup Newsletter

Volume 2 Issue 1

[www.aasanjose.org](http://www.aasanjose.org)

January 2007

## The Conference Structure

from the A.A. Service Manual

A.A.'s founders realized that leadership could not forever rest with them, so the Conference assumed leadership in 1955. Of course, the second generation of leadership needed guidance. In 1959, Bill published a Grapevine article about leadership, in which he listed essential attributes of good leadership: responsibility, tolerance, flexibility, and vision. In the second generation of the fellowship, there were still people who knew the first-generation founders, but now almost none remain. The comprehensiveness of the Twelve Concepts ensures that the Fellowship will enable rather than disable A.A.'s leaders so they can responsibly execute leadership.

The Conference structure is the framework in which the "general services" of A.A. (as a whole) are carried out. It is a method by which A.A.'s collective group conscience can speak forcefully and put its desires for worldwide services into effect. It is the structure that takes the place of government in A.A., ensuring that the full voice of A.A. will be heard and guaranteeing that movement-wide services will continue to function under all conditions

### Why Do We Need A Conference?

*The late Bernard B. Smith, nonalcoholic, then chairperson of the board of trustees, and one of the architects of the Conference structure, answered that question superbly in his opening talk at the 1954 meeting:*

"We may not need a General Service Conference to ensure our own recovery. We do need it to ensure the recovery of the alcoholic who still stumbles in the darkness one short block from this room. We need it to ensure the recovery of a child being born tonight, destined for alcoholism. We need it to provide, in keeping with our 12<sup>th</sup> Step, a permanent haven for all alcoholics who, in the ages ahead, can find in A.A. that rebirth that brought us back to life.

"We need it because we, more than all the others, are conscious of the devastating effect of the human urge

for power and prestige which we must ensure can never invade A.A.. We need it to ensure A.A. against government, while insulating it against anarchy; we need it to protect A.A. against disintegration while preventing over integration. We need it so that Alcoholics Anonymous, and Alcoholics Anonymous alone, is the ultimate repository of its Twelve Steps, its Twelve Traditions, and all of its services.

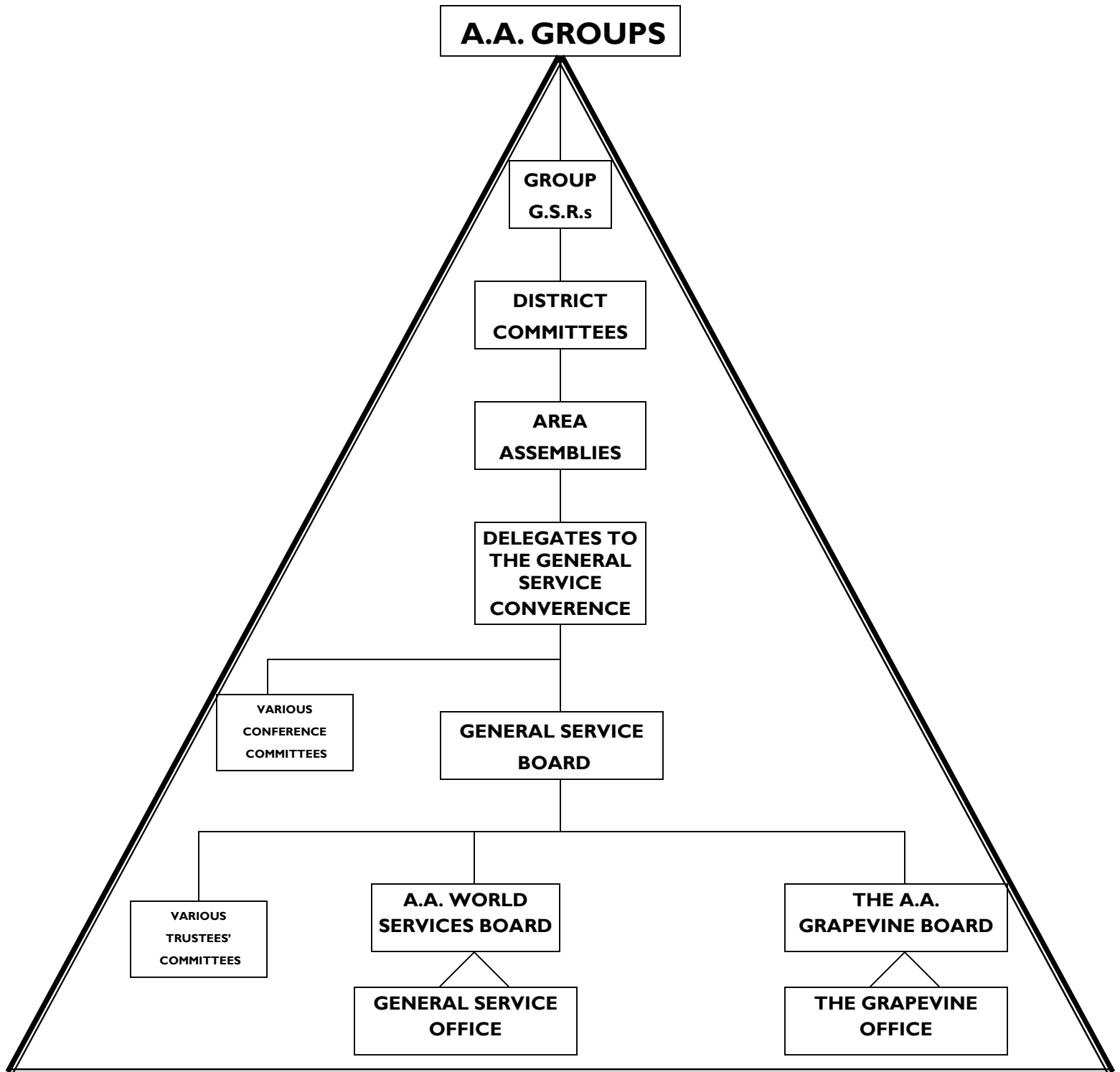
"We need it to ensure that changes within A.A. come only as a response to the needs and the wants of all A.A., and not of any few. We need it to ensure that the doors of the halls of A.A. never have locks on them, so that all people for all time who have an alcoholic problem may enter these halls unasked and feel welcome. We need it to ensure that Alcoholics Anonymous never asks of anyone who needs us what his or her race is, what his or her creed is, what his or her social position is."

As Bill W. wrote, "The A.A. groups today hold ultimate responsibility and final authority for our world services..."

If your group does not have a General Service Rep, consider volunteering to be this vital link between the General Service Office in New York and your own group. It will ensure your group participates in A.A. as a whole.

### In This Issue

|        |  |
|--------|--|
| Page 1 | Conference Structure                     |
| Page 2 | General Service pyramid                  |
| Page 3 | Central Office                           |
| Pg. 4  | 12 Tradition Check List                  |
| Pg. 5  | God Box                                  |
|        | New Beginnings                           |
| Pg. 8  | Birthdays                                |
| Pg 9   | Calendar                                 |
|        | Intergroup Minutes and Financial Reports |



**The General Service Conference Structure  
(U.S. and Canada)**

This organization chart shows that the communication process starts with the A.A. Group, which lets its group conscience—to initiate an action, or for or against a proposed action—be known to its elected general service representative (GSR). The GSR makes sure the group’s wishes are heard and fully considered at the District Committee meetings and Area Assemblies, and are part of the Delegate’s thinking at the annual General Service Conference. The Area Delegate then reports back to the GSRs concerning the Conference actions and the GSRs then communicate this information to their groups.

## Central or Intergroup Offices

Facts you may not know about your Intergroup Central Office and how it functions as part of A.A. as a whole:

Your central office is an A.A. service office that involves partnership among groups in Santa Clara County, just as A.A. groups themselves are partnerships of individuals. A central office is established to carry out certain functions common to all the groups – and it is usually maintained, supervised, and supported by these groups in their general interest. It exists to aid the groups in their common purpose of carrying the A.A. message to the alcoholic who still suffers.

Your central office provides these basic services (among many others):

- **A.A. Inquiries** – by providing an A.A. listing in the local telephone directory, the central office may receive inquiries from those seeking help. They will refer the caller to a meeting, or have a 12<sup>th</sup> stepper contact them.
- **Office Facilities** – a conveniently located office in which paid workers and/or volunteers are available to carry the message of A.A. to the alcoholic.
- **Meeting Directories** – at regular intervals, may publish and distribute up-to-date directories and other information about local A.A. services.
- **Information Exchange** – function as a clearinghouse for the circulation and exchange of information among all the A.A. groups in the community.
- **Public Information and Cooperation With the Professional Community** – an ideal contact with those in the community seeking information about A.A..
- **Local A.A. Events** – are posted at central office
- **A.A. Newsletter** - (you're reading it)
- \* **Special Needs Services** – carry information on meetings with wheelchair accessibility or sign language.

Central Office is managed by a Central Service Board, and deals with general policies and plans. This Board reports activities, both problems and accomplishments, to the monthly Intergroup meeting.

Your Intergroup Rep attends to ensure two-way communication, both from the home group and the monthly Intergroup meeting.

How is Intergroup Central Office Financed?

**Group collections** – A.A. groups participating in the financial support of the central office may choose to make their contributions by setting aside fixed sums from their regular collections. Many groups pledge a fixed amount, which is paid periodically. This assures the central office of a regular income, and certainly helps it to plan the best means of meeting its own obligations.

Occasionally there are groups that do not support a central office. In these cases, the spirit of contributing voluntarily, that prevails throughout A.A., applies. If groups can't or choose

not to pay their share of the costs, they shouldn't be denied the services of the office.

**Special Contributions** – some groups provide a special box or basket, or A.A. members may make individual contributions.



## Happy New Year from the Intergroup Council

This is the time of the year when groups elect new representatives to the various service organizations like Intergroup, General Service and H&I. If you have been thinking about starting a new service commitment now is a good time to do it.

The Intergroup Council has just started a discussion about how we can better serve the groups and increase participation at Intergroup. We would like to invite you to join us in this ongoing process. You can join us as an IG Rep or as an interested member of A.A.

You can drop in anytime or you can serve your group and help carry the message to the new member as a voting IG Rep.

The Intergroup Council meets on the first Wednesday of every month at 8PM at Queen of Apostles School, Geary Hall, 4950 Mitty Way, San Jose near Lawrence Expressway and Highway 280.

We hope to see you soon.

Bill D.

Intergroup Council Chair



**My Tradition Twelve Checklist**

From A.A. Grapevine©

1. Why is it a good idea for me to place the common welfare of all A.A. members before individual welfare? What would happen to me if A.A. as a whole disappeared?
  2. When I do not trust A.A.'s current servants, who do I wish had the authority to straighten them out?
  3. In my opinion of and other remarks about other A.A.s, am I implying membership requirements other than a desire to stay sober?
  4. Do I ever try to get a certain A.A. group to conform to my standards, not its own?
  5. Have I a personal responsibility in helping an A.A. group fulfill its primary purpose? What is my part?
  6. Does my personal behavior reflect the Sixth Tradition – belie it?
  7. Do I do all I can to support A.A. financially? When is the last time I anonymously gave away a Grapevine subscription?
  8. Do I complain about certain A.A.s' behavior – especially if they are paid to work for A.A.? Who made me so smart?
  9. Do I fulfill all A.A. responsibilities in such a way as to please privately even my own conscience? Really?
  10. Do my utterances always reflect the Tenth Tradition, or do I give A.A. critics real ammunition?
  11. Should I keep my A.A. membership a secret, or reveal it in private conversation when that may help another alcoholic (and therefore me)? Is my brand of A.A. so attractive that other drunks want it?
- What is my real importance among more than a million A.A.'s.

**Humility Prayer**

A prayer that all oldtimers carried with them, that has been lost to history...

Deliver me from the compulsive habit of thinking I must always have something to say on every occasion.

Release me from the craving of trying to straighten out everyone else's affairs.

Restrain my mind from the recital of boring, endless and pointless details ... give me the wings to get to the point.

And though I dare not ask for grace enough to enjoy the tales of others, help me to endure them with patience and tolerance.



Give me reasonable doubt and less cocksureness when my memory and viewpoint seem to clash with those of an opposite opinion.

Teach me the glorious lesson that sometimes I may be wrong.

Give me the ability to see good things in unexpected places, and unexpected talents in people.

Give me the grace to tell them so.

Help me to be reasonably good, honest, and cheerful, but not a saint ... (because we all know how hard some of them are to live with!).

Teach me to be thoughtful, but not moody; helpful but not bossy; observing, but not critical.

And, though with my vast store of self proclaimed wisdom– it seems a pity not to use it all up – please remember, Lord, I want a few friends left at the end.

So, teach me to be ever grateful, and let me never forget Your grace, and the help of others.

AMEN

## The God Box

A God Box is simply a container large enough to hold a slip of paper. Each of us has things in our life over which we are powerless. If you are like I am, you tend to obsess over those things. The essence of our relationship with God is the faith that God – or the universe – is watching over us and caring for our needs. Unfortunately, at times my faith is lacking. I pray and pray over the same things until even God's patience must be tried!

In those circumstances, I go to my God Box. I sit down and write a little letter to God. I outline my problem, my possible solutions, if any, and I ask for what I need – wisdom, courage, strength, money, etc. I pray only one last prayer and then I put it in the box. I then walk away and don't pray about it again. It is a way of committing something to God with such a strong belief in his caring that we know we can walk away and He has it handled.

Another aspect of the box's reaffirming powers is that when you go back to the box you find the slips of paper you put in the last time you used it. Things that seemed very big at the time that worked out without a hitch are great encouragement when your faith needs a boost. You must also remember that the box doesn't make God listen more, or impact God at all. It is simply a tool.

Anonymous



## A New Meaning

My intelligence, instead of drawing me further away from spiritual faith, is bringing me closer to it. I no longer react in quite the same way when my will and desires are apparently frustrated. The simple words "Thy Will Be Done" and the simple ideas of honesty and helping others are taking on a new meaning for me. I should not be surprised to find myself coming to the astounding conclusion that God, whomever or whatever He may be, is eminently more capable of running this universe than I am. At last, I believe I am on my way.

C. 2003, A.A.W.S., Experience, Strength and Hope, p. 127.

With permission, Alcoholics Anonymous World Services, Inc.

## NEW BEGINNINGS



It was with great enthusiasm that I moved to the country. Well, on one level, anyway.

I was actually booted from my home by divorce, firmly planted in mid-air, as Jack Holt would say. I had slacked off on my meetings, apparently trading in a round of applause and keep-coming-backs for a ribbon at a dog show and letting everything just drift away. The times had changed, the people had changed, and the rules had changed. I didn't notice that it was any one thing. I didn't notice that it was one thing. It was my inability to compartmentalize my program. It was what many of us were faced with at a time that now seems like ancient history. But anyone who introduced themselves as, or by any mention of, having a problem in life other than alcoholism in the strictest sense of the word was deemed heretic. I know there were movements and whole groups of meetings started to promote the concept of "pure alcoholics". I didn't really take it seriously; I never felt the need to change my meetings or my spiel. I have since found that there were many people who came to a place where they could not endure the changing of times and the changing of the true meaning of "the only requirement". Some of these were friends; they had attended my wedding, my art exhibits, my parties. And now they were disenfranchised as they no longer had a place in A.A. and they had never belonged to any other "A" and all the other "A's" were founded well after they had dug in and planted their roots here. And that is where I ran aground.

I was asked to write an article about moving away and what it was like. But what I am finding as I write is that I started moving away long before I actually did.

I had a husband now. I was tired of fighting for a seat in A.A. and I didn't really know where else to go. I didn't have a driving raging addiction to impel me to another anonymous program and yet there were parts of my story that were perceived as "not directly related to alcohol". Slowly I stopped coming back.

My piece of the puzzle was perhaps no longer a “fit”. It was not my experience, strength and hope that was my connection, it was now what I drank, how often and where that made me welcome or of value. I couldn’t believe that my beautiful A.A. had so turned against me when I had fought so hard to stay in the first place.

And so, day by day, I moved away. And I stayed away. And my life started to fall apart. There was no longer any glue to hold me together. My “home” had changed and I apparently wasn’t welcome anymore. I would have to change who I was to once again return and to be of service. So, it was at this point, at my 17<sup>th</sup> year of sobriety, that my husband had announced one morning that he had an attorney and had filed for divorce and that was that. I was shocked and relieved at once. I moved from my home, my meetings, my life in the blink of an eye and was completely unprepared.

I was reeling with pain and confusion. No one in my family had ever been divorced. My best friend had never been divorced – she got married right after me. I had no idea what I was supposed to do, was supposed to feel, and here I was out in the middle of nowhere, no connections, and at first, no phone. The meetings here were small. Maybe 15 to 20 people on a good day. And they all looked different to me. They didn’t look like friends.

I was a newcomer again and it didn’t seem to matter how many years of sobriety I had. I was shaking, shut down and scared. I couldn’t find my voice. Whatever it was that came out of my mouth whenever I volunteered to share was pure gibberish. Where had Bunny gone? Where were the annoying people who quoted the same things out of the Big Book and who had those clever little sayings? I had no history here. There had been no “little Eddie” here. There had been no Jack Holt. There was no Pablo. These people were all newcomers to me and I to them. It was the biggest cavern I have ever had to face in my sobriety.

I panicked and called my A.A. expert friend. She knew it all. I loved her and she was wonderful. She was able to mirror me and I cherished that. She told me something very important about myself. That it had taken me 17 years to trust anyone in San Jose, so how could I expect myself to trust any of these new people?

She gave me the grace of time. It will take time for me to trust. It will take time for these people to come to love me as you have.

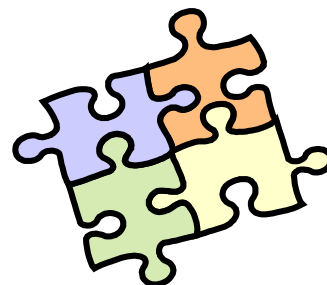
It is a new puzzle out here. Where my piece fits isn’t exactly clear, but I can see the whole picture and there is a place for it. I just don’t know where. In order to find my fit, I need to take my puzzle piece to as many meetings as I can and help define the picture around me. Only then will I have successfully transformed and become part of the bigger picture once more.

But don’t think I don’t know from what puzzle I came. Like the salmon who swim upstream to spawn here, I return to my home whenever I can and visit the meetings to catch a glimpse of those who sit in the same meeting in the same place with the same message and I am renewed. Sometimes they are really there and sometimes only in my mind’s eye.

We all need your piece of the puzzle to make our lives complete. So please, wherever you are or whatever you’re feeling, bring it back and let us complete the puzzle together. I heard a man not long ago at a speaker meeting say something about “scratching his watch and winding his ass” and I knew that he knew Jack and I knew that I had found home again.

My name is Bunny and I am an Alcoholic and a whole lot more. I for one will strive for perfection – the perfect acceptance of God’s will - which after all is simply to become myself and wonder at how perfect He made me to handle anything that He has thrown in my path. It matters not to Him who I carry His message to, or how closely my experience matches theirs. Only that I carry the message – that of love and of hope.

Thanks for letting me share.



***Telephone Calls Received During December***

Daytime at Central Office - 537

Daytime 12 Step Calls - 7

Evening and Weekend calls - 604

Evening 12 Step Call information is not available.

**WHEN ANY ALCOHOLIC, ANYWHERE,  
REACHES OUT FOR HELP, I WANT THE HAND  
OF A.A. TO BE THERE. AND FOR THAT: I AM  
RESPONSIBLE.**

Groups contributing to your Central Office make it possible to provide telephone service and coverage so that someone is always available to the caller in need. We also have a listing in the white and yellow pages of the phone books for all the cities in Santa Clara County.

**WE THANK YOU!**

**MEETING CHANGES****Delete -**

Sweet Sobriety, Sunday, 2:00PM, Alano Club of San Jose, 1122 Fair Ave., San Jose

**Moved -**

Young & Sober, Saturday Nite Live, Thursday 10:00 PM, moved to Immanuel Lutheran Church, 14103 Saratoga Ave., Saratoga

Sunlight of the Spirit, Saturday Nite Live, Tuesday, 10:00 PM, moved to Immanuel Lutheran Church, 14103 Saratoga Ave., Saratoga

**Changed -**

Women's Topic Discussion, Saturday Nite Live, Sunday  
Time changed to 10:00 AM

Men's Single Problem Discussion, Thurs., Campbell.  
Time changed to 8:00 PM

**New -**

Naked Truth Group, Friday, 8:00PM, 20600 Aldercroft Heights, Los Gatos

Willow Glen AA, Friday, 8:15PM, St. Frances Church, 1205 Pine, at Newport, San Jose

Sub "21" Young People, Friday, 8:15PM, St. Frances Church, 1205 Pine, at Newport, San Jose

AA Literature Discussion Group, Tues. Noon, United Methodist Church, 655 Magdalena Ave., Los Altos

Courage to Heal, Mon. 6:00 PM, St. Stephen's Episcopal Church, 651 Broadway, Gilroy

**SPEAKER MEETINGS****Weekender Speaker Meeting**

Sundays at 6 p.m.

Good Shepherd Lutheran Church  
1735 Hecker Pass Road, Gilroy

**Grapevine Speakers Meeting**

Fridays at 8 p.m.

Presbyterian Church  
San Tomas & Homestead, Santa Clara

**Second Tradition Group of A.A.**

Saturdays at 8 p.m.

Lincoln Glen Church,  
2700 Booksin Ave, San Jose

**Saturday Night Speakers—8 p.m.**

Alano Club of San Jose

1122 Fair Avenue, San Jose

**Remember We Deal With Alcohol**

Saturdays at 8 p.m.

St. Mark's Church  
1957 Pruneridge Ave., Santa Clara

**Saturday Nite Live Group**

Fridays at 8 p.m.

1388 S. Bascom at Stokes, San Jose

**Speaker Meeting—VA Hospital**

Sunday at 11:15 a.m.

3801 Miranda Ave., Palo Alto

**Saturday Morning Fellowship**

United Presbyterian Church

Fremont &amp; Hollenbeck, Sunnyvale

Saturday at 10 a.m.

# Birthdays Contributions

| Name            | Years | Gift From              | Birthday   |
|-----------------|-------|------------------------|------------|
| Bob C           | 35    | Wilda C                | 11/29/1971 |
| Mario C         | 40    | Kendra F               | Unknown    |
| Ernie B         | 20    |                        | 12/03/1986 |
| Clayton S       | 8     | Dominic B.             | 12/04/1998 |
| Julie S         | 30    | Aileen B               | 12/07/1976 |
| Julie S         | 30    | Rita R.                | 12/07/1976 |
| Sheila M        | 34    |                        | 12/11/1972 |
| Michelle O      | 5     | Pat C                  | 12/13/2001 |
| Chuck the Mover | 17    | Pat C                  | 12/14/1989 |
| Patty H         | 1     | Pat C                  | 12/14/2005 |
| Elfriede S      | 24    | Aileen B, Rita R       | 12/17/1982 |
| Wilda C         | 35    | Bob C                  | 12/18/1971 |
| Butch M         | 30    | Rita R, Aileen B       | 12/18/1976 |
| Myrtle          | 3     | Pat C                  | 12/18/2003 |
| Jennifer F      | 25    | Domini C, Bernadette P | 12/24/1981 |

## HAPPY BIRTHDAY

For a total of

**337 YEARS OF SOBRIETY**

and for a total contribution of **\$467.00**



The Birthday Plan has been a part of the A.A. Tradition since the 1955 Conference. Individual contributions help ensure that the A.A. message is carried from one member to another.

If you would like to participate or honor a friend, please use the birthday forms at your Meeting or Central Office.



# January 2007

| Sun | Mon                            | Tue                                    | Wed  | Thu | Fri | Sat                                 |
|-----|--------------------------------|--|--|-----|-----|-------------------------------------|
|     | 1 <i>Central Office closed</i> | 2                                      | 3 <i>Intergroup</i>  | 4   | 5   | 6 <i>Secretary Workshop</i>         |
| 7   | 8                              | 9                                      | 10 <i>North County General Service—6:30 - Service Manual Study</i> | 11  | 12  | 13 <i>PI/CPC</i>                    |
| 14  | 15                             | 16 <i>South County General Service</i> | 17   | 18  | 19  | 20 <i>Central Office OPEN HOUSE</i> |
| 21  | 22                             | 23 <i>H&amp;I</i>                      | 24   | 25  | 26  | 27                                  |
| 28  | 29                             | 30                                     | 31   |     |     |                                     |

**EVENTS**

**CALIFORNIA**

January 12-14, 2007 - The Joy of Living (Women)  
 \$225 per person, mail to: 1534 Ridgewood Dr., Martinez, CA 94553

January 26-28, 2007 - 14<sup>TH</sup> Annual Shasta Winterfest  
 For info write: Shasta Winterfest, P.O. Box 494927, Redding, CA 96049-4927

**OUTSIDE CALIFORNIA**

January 12-14, 2007  
 Fellowship of Miracles 17<sup>th</sup> Annual River Roundup  
 Laughlin, NV - [www.rcco-aa.org](http://www.rcco-aa.org)

May 8-11, 2007  
 Seniors in Sobriety, Sedona, AZ.  
 Contact: [WCGould@aol.com](mailto:WCGould@aol.com) or [11203.jfs@earthlink.net](mailto:11203.jfs@earthlink.net)

**INTERNATIONAL EVENTS**

43rd International Women's Conference  
 February 15—18, 2007, Detroit, MI [www.iaawc.org](http://www.iaawc.org)



# SANTA CLARA COUNTY INTERGROUP COUNCIL

## MINUTES MONTHLY MEETING

January 3, 2007

- Bill D, Intergroup Chairperson, opened the meeting at 8pm, followed by A Moment of Silence, and the Serenity Prayer.
- Maxine read the short Definition of Intergroup.
- Of the sixty-one people present, there were 40 voting representatives and 7 guests attending.
- Bill read the Twelve Traditions.
- There was one addition to the agenda: a discussion and vote on IG's involvement with an upcoming Spanish speaking conference.
- There were no corrections to the previous month's minutes.
- Intergroup Council Treasurer's Report: Chuck G.

|                    |               |         |                          |
|--------------------|---------------|---------|--------------------------|
| Beginning Balance: | 12/05/06      | \$90.00 | Prudent Reserve: \$90.00 |
| Contributions:     | 12/05/06      | 81.00   |                          |
| Refreshments:      | 12/05/06      | 18.00   |                          |
| Rent is paid to:   | April 1, 2007 |         |                          |
| Balance:           | 01/03/07      | \$63.00 | Prudent Reserve: \$90.00 |
- Announcements: Lizz announced that SCCYPAA would host a comedy show following a speaker meeting on January 27, at 6pm at the Elks Lodge in Los Gatos. A dance will follow. Ron announced that the Sunday, 8pm meeting "Sober in the Park" on San Thomas needs support
- Birthdays: Chris, 1yr; Jim, 27yrs, George, 38yrs.

### Reports:

1. Intergroup Chair – Bill D. attended the Outreach Committee meeting earlier tonight, and was given a copy of the invitation that is extended to meetings not involved in IG. He also stated that Unity Day needs an IG Co-Chair and anyone interested in serving to contact him after the meeting
2. Central Service Board – Robbie R. reported that the CSB has continued discussions on how to increase participation in IG, what service or options IG can offer, and increasing secretary workshop participation.
3. Central Office – Bruce
  - Announced the Central Office Open House Saturday, January 20. There will be a raffle, items on sale and the Archives Corner.
  - An updated meeting guide has just been published.
  - Volunteers are needed to trim and bundle the meeting guide into groups of 20. The commitment is for 2 to 2 ½ hours per week.
  - The January newsletter is full of information about service.
  - Financials – last year we did well, with a surplus of about \$2,000. This year should be even better.
  - For Open Forum discussion later on how do we increase participation, Bruce suggested ideas such as a New Year's Party, Picnic, Monthly Birthday Parties. He described the Monterey big New Year's Blowout with about 350 people attending.
4. PI/CPC – Francisco
  - There are only a couple presentations scheduled, including in high schools in April. Ongoing presentations are held at DUI classes every 60 days.
  - The committee plans to contact the Santa Clara County judges.
5. Twelfth Step Committee
  - Daytime – No Report
  - Nights and Weekends – Maxine reported that Christmas and New Years shifts were filled in spite of a little trouble in the beginning. She also listed three open shifts, and reiterated that the diverter is the most important job we have. Diverter packets are mailed quarterly. She is

- planning on providing a list of open shifts to Bruce prior to the Intergroup monthly meeting. The list will be copied for distribution at the meeting.
6. Outreach Committee – Sally
    - Out of 173 meetings, 112 have been visited, and 15 were found to no longer exist.
    - New members are very much needed on the committee to attend meetings, and invite those meetings to send a rep to IG.
  7. Newsletter – Rose
    - Please write articles for the Newsletter! Service groups are strongly encouraged to write articles about their work. All IG reps are urged to take Newsletters to the groups they attend. All contributions may be e-mailed to Bruce at Central Office.
  8. Other Service Committee Reports
    - Unity Day – No Report
    - Northern California Council of Alcoholics Anonymous – No Report
    - Hospitals and Institutions – Paul C. distributed an updated chart with H&I service opportunities, and service requirements. He also reported that the Pink Cans raised over \$35,000 last year for literature, and that Northern California purchases more literature from New York for H&I than anyone in the world (including Hazeldon.)
    - BTG – No Report
    - North County General Service – Jeanie reported that General Service is looking for volunteers also, and that they are studying the General Service Manual for new GSRs. The monthly General Service meeting is listed on the inside cover of the meeting guide.
    - South County General Service – Raymundo announced that he is the new DCMC for the South County General Service monthly meeting, also listed on the inside of cover of the meeting guide.

UNFINISHED BUSINESS - None

#### NEW BUSINESS

- Bill D noted that in the IG Procedures Guide, the IG Chairman has the responsibility for appointing, and Intergroup must approve, Standing Committee Chairpersons. In that regard he appointed, and a vote was taken to confirm, the following:
  - Sally as Outreach Committee Chair
  - Darcy as Public Information Chair
  - Francisco as Cooperation with the Professional Community Chair
 The Unity Day Chair will be appointed in February.
- Bruce and Rufino – The Spanish Speaking Community will be having their 32<sup>nd</sup> Annual Convention on May 25, 26, & 27 in Santa Clara, and would like to know if any groups would be interested in hosting English language meetings during the convention. A discussion followed about how this would be managed, and it was decided that Central Office would simply coordinate the schedule for groups that would hold meetings, and would be the conduit for information to and from Rufino's group. IG reps would present this opportunity to their groups, and those interested will contact Central Office.

#### OPEN FORUM

- Alphabet Soup – All acronyms will be explained in the meeting guide.
- Special Events – Bruce was asked to make a presentation next month.
- Ron asked if the newsletter could be put on-line. Bruce responded that he is looking into it.
- Chuck wants to update the Santa Clara County Archives, and would appreciate more committee members. The group meets every 3<sup>rd</sup> Saturday at 10am at Central Office. Saturday Night Live has a history book for Chuck.
- Jim stated that IG is not a static organization, and suggested a 10 second sound bite that describes IG and what we do. He will bring a draft next month.

With no further business, the meeting was adjourned at 9:18pm.

Respectfully submitted,  
Alison

INTERGROUP CENTRAL OFFICE OF SANTA CLARA COUNTY, INC.

Profit & Loss

December 2006

|  | <u>Dec 06</u>        | <u>Dec 05</u>           | <u>Jan - Dec 06</u>    |
|--|----------------------|-------------------------|------------------------|
| Ordinary Income/Expense                                      |                      |                         |                        |
| Income   |                      |                         |                        |
| 3030 · Contributions-General                                 | 12,104.75            | 8,828.94                | 120,972.99             |
| 8010 · Literature Sales                                      | 4,121.15             | 7,070.04                | 68,559.88              |
| 8020 · Meeting Guide Sales                                   | 707.00               | 0.00                    | 2,182.00               |
| 8060 · Newsletter Subscriptions                              | 30.00                | 37.00                   | 760.00                 |
| <b>Total Income</b>  | <u>16,962.90</u>     | <u>15,935.98</u>        | <u>192,474.87</u>      |
| Cost of Goods Sold   |                      |                         |                        |
| 5000 · Cost of Goods Sold                                    |                      |                         |                        |
| 5100 · Cost of Inventory Sold (Excl. Mtg. Dir. after 6/1/06) | 2,426.56             | 4,530.97                | 42,066.25              |
| 5150 · Cost of Meeting Directories (After 6/1/06)            | 324.97               | 0.00                    | 2,756.51               |
| <b>Total 5000 · Cost of Goods Sold</b>                       | <u>2,751.53</u>      | <u>4,530.97</u>         | <u>44,822.76</u>       |
| <b>Total COGS</b>  | <u>2,751.53</u>      | <u>4,530.97</u>         | <u>44,822.76</u>       |
| <b>Gross Profit</b>  | <u>14,211.37</u>     | <u>11,405.01</u>        | <u>147,652.11</u>      |
| Expense  |                      |                         |                        |
| 6010 · Alarm Service   | 0.00                 | 0.00                    | 708.00                 |
| 6030 · Accounting and Legal Fee                              | 187.89               | 92.88                   | 6,463.36               |
| 6060 · Amortization of Improvements                          | 3.25                 | 3.25                    | 9.75                   |
| 6070 · Bank Credit card charges (Credit card costs and fees) | 55.39                | 0.00                    | 283.65                 |
| 6120 · Computer Expenses                                     | 125.00               | 0.00                    | 1,464.23               |
| 6140 · Conferences - Office Manager                          | 0.00                 | 0.00                    | 1,801.74               |
| 6150 · Unity Day Expense                                     | 0.00                 | 0.00                    | 530.00                 |
| 6160 · Copier Expense  | 153.06               | 265.96                  | 1,451.50               |
| 6190 · Depreciation Expense                                  | 819.50               | 473.00                  | 3,242.25               |
| 6200 · Diverter Expense                                      | 0.00                 | 0.00                    | 273.20                 |
| 6220 · Insurance - Worker Compensation                       | 514.00               | 729.50                  | 1,026.02               |
| 6230 · Insurance - General Liability                         | 289.75               | 388.75                  | 1,386.59               |
| 6240 · Employee HRA Plan                                     | 549.70               | 0.00                    | 6,996.12               |
| 6245 · Internet Access Charges                               | 19.95                | 19.95                   | 239.40                 |
| 6280 · Miscellaneous Expense                                 | 0.00                 | 0.00                    | 0.00                   |
| 6330 · Office Expense  | 514.90               | 716.04                  | 5,119.76               |
| 6350 · Office Furnishings - Expense                          | 0.00                 | 0.00                    | 678.69                 |
| 6370 · Office Paper Supply                                   | 0.00                 | 0.00                    | 672.12                 |
| 6380 · Payroll Taxes   | 532.59               | 609.89                  | 6,329.74               |
| 6410 · Postage   | 78.00                | 154.28                  | 2,486.07               |
| 6430 · Public Information                                    | 0.00                 | 0.00                    | 200.00                 |
| 6480 · Rent  | 2,217.25             | 2,153.90                | 26,668.65              |
| 6510 · Repairs & Maintenance                                 | 0.00                 | 0.00                    | 88.21                  |
| 6540 · Salaries - Office                                     | 6,882.90             | 7,513.57                | 75,487.24              |
| 6600 · Signing Services                                      | 200.00               | 200.00                  | 2,600.00               |
| 7010 · Taxes and Licenses                                    | 0.00                 | 0.00                    | 60.00                  |
| 7050 · Telephone   | 303.82               | 404.27                  | 2,035.06               |
| 9080 · Sales Tax (Sales tax paid on purchases)               | 8.21                 | 0.00                    | 8.21                   |
| 9090 · Loss on Asset Disposal                                | 0.00                 | 32.45                   | 0.00                   |
| <b>Total Expense</b>   | <u>13,455.16</u>     | <u>13,757.69</u>        | <u>148,309.56</u>      |
| <b>Net Ordinary Income</b>                                   | <u>756.21</u>        | <u>-2,352.68</u>        | <u>-657.45</u>         |
| Other Income/Expense   |                      |                         |                        |
| Other Income   |                      |                         |                        |
| 8030 · Interest Income                                       | 200.00               | 178.71                  | 2,309.35               |
| <b>Total Other Income</b>                                    | <u>200.00</u>        | <u>178.71</u>           | <u>2,309.35</u>        |
| <b>Net Other Income</b>                                      | <u>200.00</u>        | <u>178.71</u>           | <u>2,309.35</u>        |
|  | <u><b>956.21</b></u> | <u><b>-2,173.97</b></u> | <u><b>1,651.90</b></u> |

INTERGROUP CENTRAL OFFICE OF SANTA CLARA COUNTY, INC.

Balance Sheet

As of December 31, 2006

|  | <u>Dec 31, 06</u>        |
|--|--------------------------|
| <b>ASSETS</b>  |                          |
| <b>Current Assets</b>  |                          |
| <b>Checking/Savings</b>  |                          |
| 1010 · Petty Cash  | 225.00                   |
| 1035 · Bank of America (Bank account)                            | 7,592.78                 |
| 1036 · Bank of America CD 5247 (10 mo CD @ 4.16%, 01/17/07)      | 12,549.49 *              |
| 1039 · Bank of America CD 5717 (12 mo. CD @ 3.73%, 1/23/07)      | 14,901.42 *              |
| 1040 · Bank of America CD 5718 (12 mo. CD @ 3.73%, 1/23/07)      | 14,916.41 *              |
| 1041 · Bank of America CD 5931 (18 mo. CD @ 3.39%, 2/28/07)      | 14,653.18 *              |
| 1042 · Capital Preservation Fund (Treas. fund currently @ 4.45%) | 3,244.60 *               |
| <b>Total Checking/Savings</b>                                    | <u>68,082.88</u>         |
| <b>Accounts Receivable</b>                                       |                          |
| 1110 · Accounts Rec - Group Deposits                             | -496.05                  |
| <b>Total Accounts Receivable</b>                                 | <u>-496.05</u>           |
| <b>Other Current Assets</b>                                      |                          |
| 1250 · Literature Inventory                                      | 15,246.06                |
| 1310 · Prepaid Insurance   | 832.91                   |
| <b>Total Other Current Assets</b>                                | <u>16,078.97</u>         |
| <b>Total Current Assets</b>                                      | <u>83,665.80</u>         |
| <b>Fixed Assets</b>  |                          |
| 1630 · Office Equipment  | 38,150.80                |
| 1640 · Office Furnishings - Asset                                | 2,197.84                 |
| 1641 · Less Accumulated Depreciation                             | -16,034.50               |
| 1680 · Leasehold Improvements                                    | 300.00                   |
| 1681 · Less Accumulated Amortization                             | -130.75                  |
| <b>Total Fixed Assets</b>  | <u>24,483.39</u>         |
| <b>Other Assets</b>  |                          |
| 1860 · Deposits  | 1,993.85                 |
| <b>Total Other Assets</b>  | <u>1,993.85</u>          |
| <b>TOTAL ASSETS</b>  | <u><u>110,143.04</u></u> |
| <b>LIABILITIES &amp; EQUITY</b>                                  |                          |
| <b>Liabilities</b>   |                          |
| <b>Current Liabilities</b>                                       |                          |
| <b>Other Current Liabilities</b>                                 |                          |
| 2240 · Sales Tax Payable (Sales Tax Payable)                     | 1,198.79                 |
| <b>Total Other Current Liabilities</b>                           | <u>1,198.79</u>          |
| <b>Total Current Liabilities</b>                                 | <u>1,198.79</u>          |
| <b>Total Liabilities</b>   | 1,198.79                 |
| <b>Equity</b>  |                          |
| 2740 · Unrestricted Funds  | 95,777.91                |
| 3900 · Retained Earnings   | 10,393.73                |
| Net Income   | 2,772.61                 |
| <b>Total Equity</b>  | <u>108,944.25</u>        |
| <b>TOTAL LIABILITIES &amp; EQUITY</b>                            | <u><u>110,143.04</u></u> |

|   |
|---|
| <p>* Our Prudent Reserve Accounts total: <b>\$60,265.10</b><br/>This represents 4.91 months of operating expenses. The Board established goal is 9 months operating expenses.</p> |
|---|

11:00 AM  
01/02/07  
Accrual Basis

**INTERGROUP CENTRAL OFFICE OF SANTA CLARA COUNTY, INC.**

**Group Contributions**

December 2006

|  | <b>Dec 06</b> | <b>Jan - Dec 06</b> |  | <b>Dec 06</b> | <b>Jan - Dec 06</b> |
|--|---------------|---------------------|--|---------------|---------------------|
| 1 INV Freedom Fellowship 70940           | 70.00         | 1,048.40            | Mon. Grateful Live Group 535             | 0.00          | 1,165.50            |
| 1 INV Fremont & Hollenbeck Group 70907   | 0.00          | 1,050.00            | Mon. HOW Group 71                        | 0.00          | 923.00              |
| 1 INV R and B Group 70972                | 312.11        | 2,590.19            | Mon. Joy of Living Meeting 92            | 0.00          | 349.56              |
| 1 INV Saturday Nite Live Group 70905     | 0.00          | 1,846.78            | Mon. Los Altos Men's Group 59            | 0.00          | 331.00              |
| 1 INV South Valley Group (Chips) 267     | 0.00          | 168.00              | Mon. Los Gatos Big Book 664              | 0.00          | 87.00               |
| 1 INV Spiritual Progress Group 70904     | 200.00        | 400.00              | Mon. Men's Group 97                      | 0.00          | 308.00              |
| ACYPAA                                   | 0.00          | 628.75              | Mon. Men's Single Problem Study 89       | 0.00          | 2,585.00            |
| Birthday Contribution 00951              | 467.00        | 5,236.60            | Mon. Men's Single Topic Discussion 582   | 0.00          | 595.00              |
| Copier Contributions                     | 0.00          | 900.00              | Mon. Midday Meeting 714                  | 87.00         | 192.00              |
| Fri. 12 Steps at Noon 303                | 0.00          | 290.00              | Mon. Midday Women's Group 91             | 0.00          | 703.10              |
| Fri. Big Book Speakers Group 289         | 0.00          | 34.04               | Mon. Night Chip 405                      | 0.00          | 133.20              |
| Fri. Big Book Study 8.00P Cupt 284       | 0.00          | 120.00              | Mon. Shared Gift (The) (Women) 61        | 0.00          | 227.50              |
| Fri. Easier Way Group 290                | 663.60        | 1,492.89            | Mon. Signs of Sobriety 402               | 0.00          | 25.00               |
| Fri. East Valley Group 322               | 0.00          | 625.00              | Mon. Source of Strength (Women) 501      | 0.00          | 70.00               |
| Fri. Fireside Group 297                  | 0.00          | 41.00               | Mon. South Valley Women's Surrender 88   | 70.00         | 130.20              |
| Fri. Gut Level Group 288                 | 0.00          | 140.00              | Mon. Villages Group of AA (The) 406      | 80.00         | 1,294.00            |
| Fri. Happy Hour 652                      | 0.00          | 500.00              | Oldtimers Meeting 80935                  | 0.00          | 71.00               |
| Fri. In the Chapel 13                    | 0.00          | 41.00               | Personal 00911                           | 430.00        | 1,797.25            |
| Fri. Lakewood Group 332                  | 0.00          | 97.30               | Sat. Attitude Adjustment 443             | 0.00          | 413.00              |
| Fri. Lesbians Living the Promises 349    | 0.00          | 288.46              | Sat. Beginners & Beyond 345              | 245.00        | 559.00              |
| Fri. Living Solutions 728                | 0.00          | 101.63              | Sat. Big Book Study 8.00P 347            | 0.00          | 200.00              |
| Fri. Men's 4th Step Group 320            | 0.00          | 50.00               | Sat. Cambrian Saturday Night 376         | 359.00        | 2,514.44            |
| Fri. No Bull Big Book 655                | 0.00          | 280.00              | Sat. Candlelight Meeting 380             | 0.00          | 120.00              |
| Fri. Saratoga Group 328                  | 0.00          | 566.00              | Sat. Early Bird 414                      | 161.00        | 321.00              |
| Fri. Saratoga Serenity Group 329         | 0.00          | 315.00              | Sat. Get Up and Go (Women) 187           | 0.00          | 316.28              |
| Fri. Starting the Steps 753              | 0.00          | 380.00              | Sat. Grace Group of AA 352               | 173.00        | 640.40              |
| Fri. Steps to Serenity 331 Snvle         | 0.00          | 100.00              | Sat. High Hope 239                       | 0.00          | 695.20              |
| Fri. Suit Up and Show Up 126             | 0.00          | 30.00               | Sat. In the Solution 647                 | 0.00          | 140.00              |
| Fri. T.G.I.F. Speaker/Discussion 298     | 0.00          | 1,550.20            | Sat. Living in the Solution (Women) 33   | 0.00          | 60.00               |
| Fri. Women Preparing for the Weekend 691 | 0.00          | 330.50              | Sat. Meditation Meeting 39               | 0.00          | 91.00               |
| G Agnews Noon Meetings 70921             | 0.00          | 2,385.95            | Sat. Men's Honesty Group 26              | 0.00          | 1,480.50            |
| G Cornerstone Service Group 70908        | 150.00        | 2,865.66            | Sat. Morning Fellowship 381              | 0.00          | 60.00               |
| G Forged From Adversity Group 70957      | 0.00          | 2,640.44            | Sat. Morning Los Gatos 777               | 0.00          | 1,330.00            |
| G Fremont & Manet Group 70975            | 0.00          | 560.00              | Sat. Mountain View Group 350             | 0.00          | 404.87              |
| G Gilroy Groups 70906                    | 203.00        | 444.50              | Sat. Newcomers, Oldtimers (Women) 769    | 0.00          | 227.50              |
| G Higher Power Hour 70952                | 0.00          | 490.00              | Sat. Night Promises 847                  | 0.00          | 325.00              |
| G Milpitas We Care Group 70934           | 0.00          | 1,350.05            | Sat. Positive Outlook Group 368          | 0.00          | 317.80              |
| G Seeking Guidance Group 70976           | 0.00          | 2,618.00            | Sat. Roots 344                           | 0.00          | 560.00              |
| G Serenity First Fellowship 70902        | 0.00          | 200.00              | Sat. Saturday 6PM Meeting 413            | 0.00          | 136.50              |
| G Sober & Free Conference 70928          | 0.00          | 397.20              | Sat. Second Tradition Group Spkr 721     | 0.00          | 815.00              |
| G South County Fellowship 70954          | 140.00        | 1,680.00            | Sat. Think Tank (Men) 361                | 700.00        | 3,500.00            |
| G Sunrise Group of Palo Alto 70963       | 0.00          | 483.00              | Sat. Trinity Group 370                   | 0.00          | 93.66               |
| G Sunrisers Group/Carrows 70932          | 556.59        | 5,671.16            | Sat. Wake Up Meeting 342                 | 0.00          | 70.00               |
| G Third Tradition Women's Grp(The 70979  | 0.00          | 1,585.00            | Sat. Women's Brunch 640                  | 280.00        | 1,051.57            |
| G Winchester Fellowship 70960            | 0.00          | 865.47              | Sober and Free Convention 70928          | 0.00          | 409.20              |
| Gratitude Month                          | 0.00          | 50.00               | Sun. AA Birthday Gilroy Group 4          | 0.00          | 70.00               |
| Intergroup Council 80909                 | 125.54        | 219.54              | Sun. Almaden Valley Discussion 30        | 0.00          | 259.00              |
| Memorial Contributions                   | 0.00          | 1,033.00            | Sun. Attitude Adjustment 446             | 245.00        | 345.00              |
| Mon. A.B.C. Women's Group 58             | 0.00          | 390.20              | Sun. Bowers Fellowship                   | 990.70        | 990.70              |
| Mon. As Bill Sees It 6.00P 518           | 0.00          | 449.40              | Sun. Eastside Step Study 45              | 30.00         | 212.00              |
| Mon. Attitude Adjustment 321             | 455.00        | 455.00              | Sun. Gay Men & Women Now Living Sob 21   | 0.00          | 179.97              |
| Mon. Downtown Steppers (Men) 392         | 84.71         | 181.36              | Sun. Gay Reflections on the Solution 841 | 51.60         | 94.60               |
| Mon. From Within 863                     | 210.00        | 623.04              | Sun. Get Well Group 17                   | 0.00          | 175.00              |
| Mon. Gay & Lesbian Sober Experience 896  | 0.00          | 118.30              | Sun. Humbly Asked 8.00A 87               | 210.00        | 420.00              |
| Mon. Gay Men & Women Together 85         | 278.66        | 423.85              | Sun. In the Basement 545                 | 0.00          | 60.00               |

11:00 AM  
01/02/07  
Accrual Basis

INTERGROUP CENTRAL OFFICE OF SANTA CLARA COUNTY, INC.

Group Contributions

December 2006

|   | Dec 06 | Jan - Dec 06 |   | Dec 06           | Jan - Dec 06      |
|---|--------|--------------|---|------------------|-------------------|
| Sun. Invaders Group 44                    | 0.00   | 100.00       | Tues. Big Book & Doughnuts (Men) 106      | 0.00             | 120.00            |
| Sun. Live and Let Live 24                 | 0.00   | 140.00       | Tues. Big Book Discussion Group 107       | 0.00             | 274.70            |
| Sun. Living Sober 21                      | 0.00   | 311.81       | Tues. Caring & Sharing 148                | 0.00             | 70.00             |
| Sun. Men's Underground Book Study 401     | 0.00   | 115.00       | Tues. Design for Living 200               | 0.00             | 210.00            |
| Sun. New People's Group 3                 | 0.00   | 158.00       | Tues. Down to Earth Group 563             | 0.00             | 266.67            |
| Sun. New Steps for Living 20              | 0.00   | 843.32       | Tues. Early Tuesday Group 119             | 0.00             | 194.60            |
| Sun. Newcomers Spiritual Progress 840     | 139.00 | 139.00       | Tues. El Camino Group 108                 | 0.00             | 387.32            |
| Sun. Pass It On Group Los Altos 418       | 0.00   | 257.95       | Tues. End of the Line Men's Group 147     | 376.59           | 1,920.77          |
| Sun. Plaza Del Rey Group 52               | 0.00   | 70.00        | Tues. Fireside Big Book Study 809         | 0.00             | 91.00             |
| Sun. Progress Not Perfection 229          | 0.00   | 385.00       | Tues. Freethinkers of the Valley 29       | 0.00             | 280.00            |
| Sun. Sizzler Group 27                     | 0.00   | 560.00       | Tues. Gay/Lesbian AA Big Book Disc 146    | 210.66           | 429.28            |
| Sun. Speaker Meeting 18                   | 0.00   | 326.00       | Tues. Happy Destiny (Women) 109           | 406.09           | 2,005.04          |
| Sun. Spiritual Progress Group 8           | 0.00   | 101.50       | Tues. In the Solution 112                 | 0.00             | 25.00             |
| Sun. Spiritual Step Study Group 233       | 0.00   | 850.00       | Tues. Los Gatos Tuesday Night 110         | 0.00             | 210.00            |
| Sun. Step by Step Group 5                 | 0.00   | 70.00        | Tues. Men's Basic Step Study Group 891    | 0.00             | 728.61            |
| Sun. Sunday Early Evening 682             | 700.00 | 1,330.00     | Tues. Noon Sstep Study 0555               | 100.00           | 100.00            |
| Sun. Sunday Night Recovery 23             | 0.00   | 100.00       | Tues. Palo Alto Men's Meeting 525         | 0.00             | 140.00            |
| Thurs. 3rd Steppers Book Study (Wom) 610  | 0.00   | 50.64        | Tues. Palo Alto Step Study 752            | 0.00             | 615.07            |
| Thurs. Attitude Adjustment 861            | 91.60  | 91.60        | Tues. St. Luke's Group 113                | 0.00             | 1,370.00          |
| Thurs. Basic Big Book 710                 | 0.00   | 350.00       | Tues. Tuesday Night Saratoga Group 152    | 0.00             | 509.23            |
| Thurs. California Avenue Supper Group 715 | 0.00   | 525.00       | Tues. Veterans of Alcohol (open) 874      | 0.00             | 511.00            |
| Thurs. Campus Group 234                   | 0.00   | 625.00       | Tues. We Are Not Saints 520               | 0.00             | 45.00             |
| Thurs. Daily Reflections                  | 0.00   | 25.00        | Tues. We Care Step Study 128              | 0.00             | 662.90            |
| Thurs. East Enders Group 720              | 140.00 | 140.00       | Tues. Winchester Mystery Meeting 102      | 140.00           | 420.00            |
| Thurs. Eleventh Step Meditation Mtg 276   | 0.00   | 90.30        | Tues. Women's Topic Disc. Group           | 0.00             | 219.96            |
| Thurs. Evergreen Group 884                | 0.00   | 140.00       | Unknown                                   | 0.00             | 906.66            |
| Thurs. Evergreen Women 36                 | 0.00   | 110.00       | Wed B.F.E. Book Study (in residence)      | 0.00             | 1,150.00          |
| Thurs. Fireside Men's Book Study          | 200.00 | 602.67       | Wed. Attitude Adjustment 198              | 0.00             | 123.00            |
| Thurs. Free to Be Me (Women) 736          | 0.00   | 105.00       | Wed. Berryessa Group 527                  | 0.00             | 626.40            |
| Thurs. Gay Men's Freedom 262              | 0.00   | 469.70       | Wed. Better Way of Living 197             | 0.00             | 155.00            |
| Thurs. Just For Today 238                 | 0.00   | 340.00       | Wed. Chip Winners Group 168               | 0.00             | 703.67            |
| Thurs. Los Altos Group 225                | 0.00   | 210.00       | Wed. Courage to Change 145                | 0.00             | 276.00            |
| Thurs. Men's Single Problem Study 220     | 0.00   | 1,314.00     | Wed. Eleventh Step Group 167              | 0.00             | 70.00             |
| Thurs. Midweek Spiritual Progress 273     | 0.00   | 100.00       | Wed. Gay Alcoholics Living / Sobriety 742 | 0.00             | 140.00            |
| Thurs. Mountain Miracles 882              | 0.00   | 714.00       | Wed. Inspiration Big Book 195             | 0.00             | 150.00            |
| Thurs. Noon Discussion 272                | 0.00   | 331.55       | Wed. Jaywalkers                           | 0.00             | 43.40             |
| Thurs. Pathfinder 543                     | 0.00   | 65.00        | Wed. Ladies Amethyst AA Study Group 749   | 0.00             | 140.00            |
| Thurs. Rincon Men's Fellowship 567        | 0.00   | 490.00       | Wed. Living with Serenity (Chip) 599      | 0.00             | 105.00            |
| Thurs. Sisters in Sobriety (Milpitas 548  | 0.00   | 155.74       | Wed. Lodestar Group / Sober Thoughts 499  | 0.00             | 100.00            |
| Thurs. Sober Times 227                    | 0.00   | 151.20       | Wed. Men's Freedom from Alcohol 606       | 0.00             | 764.00            |
| Thurs. South Valley Group 267             | 70.00  | 70.00        | Wed. Midweek Spiritual Progress 213       | 0.00             | 700.00            |
| Thurs. South Valley Men's 845             | 0.00   | 290.00       | Wed. Noon Discussion 177                  | 0.00             | 245.00            |
| Thurs. Spiritual Progress 269             | 0.00   | 770.00       | Wed. Other Wednesday Nite (Men) 209       | 1,257.90         | 2,382.10          |
| Thurs. St. Mark's Group 270               | 0.00   | 590.61       | Wed. Serenity Discussion 210              | 0.00             | 1,094.00          |
| Thurs. Starlight Solutions (Home) 750     | 0.00   | 72.68        | Wed. Sober Thoughts 499                   | 0.00             | 80.00             |
| Thurs. Sunshine Group 243                 | 0.00   | 210.76       | Wed. Step Study (Women) LG 820            | 0.00             | 156.80            |
| Thurs. There Is a Solution (Men) 732      | 0.00   | 482.20       | Wed. Steps & Traditions 893               | 0.00             | 210.00            |
| Thurs. What's Happening Today 552         | 0.00   | 569.10       | Wed. Sundowners' Dinner Meeting 768       | 182.40           | 328.31            |
| Thurs. Women Sharing the Solution 519     | 0.00   | 601.30       | Wed. Women on the Move 570                | 62.00            | 415.91            |
| Tues. 12 Steps & HOW (Women) 25           | 0.00   | 308.00       | Wed.. 4th Dimension Grp (in residence)    | 0.00             | 40.00             |
| Tues. 449 Acceptance Group 157            | 0.00   | 100.00       |   |                  |                   |
| Tues. A Vision for You Women's 802        | 0.00   | 218.37       |   |                  |                   |
| Tues. AA Love & Tolerance Big Book 416    | 0.00   | 100.00       |   |                  |                   |
| Tues. Back to Basics Saratoga Noon 151    | 0.00   | 285.50       |   |                  |                   |
| Tues. Basic AA Text Study 803             | 0.00   | 71.73        |   |                  |                   |
|   |        |              |   | <b>12,104.75</b> | <b>120,772.99</b> |

**Secretaries  
Please read to  
Your groups**

**If you, or someone you know, hasn't yet registered with Central Office as a new Secretary or a new Intergroup Representative, please call Central Office right away.**

P.s. We're still looking for volunteers for:

The Newsletter  
Bulk mailings  
The meeting directory  
Phones  
And so much more

**Where are you?**



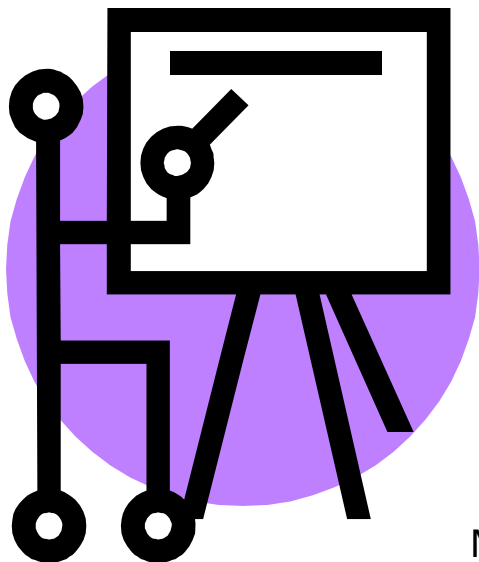
# CENTRAL OFFICE OPEN HOUSE

Lots of  
stuff that  
really must go!

*INVENTORY*

*REDUCTION*

*SALE*



**SATURDAY, JANUARY 20, 2007**

**TIME: 10:00am TO 4:00pm**

274 E. HAMILTON AVE., SUITE D

CAMPBELL, CA 95008

FREE RAFFLES  
throughout the day  
Great prizes.

Meet your Central Office staff, visit the archive display, join us for refreshments. You will be surprised at the items carried in inventory and available to you.

**MARK YOUR CALENDAR**